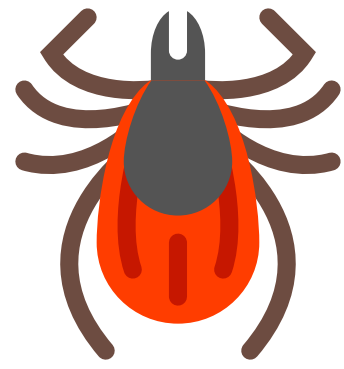


MICHIGAN TICKS








Explore the connections between ticks, climate change, and health effects like Lyme disease. Learn more about environmental and human health data with MiTracking.

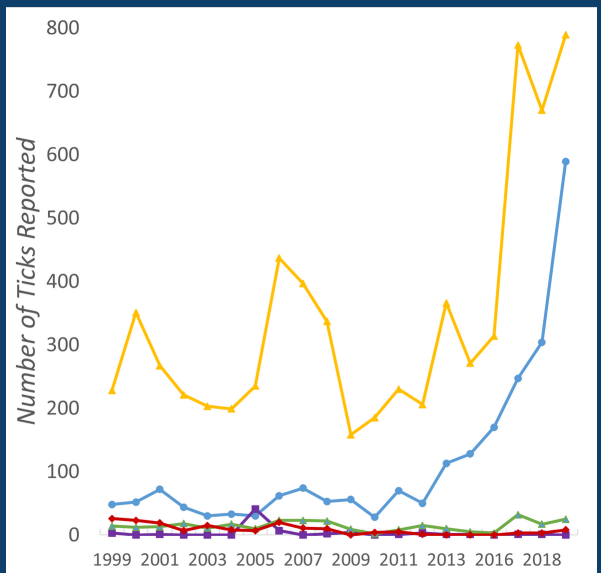
COMMON TICK TYPES

Michigan has about 20 tick types. Ticks can bite humans and spread disease.

The MiTracking data portal has data on the five most common Michigan tick types:

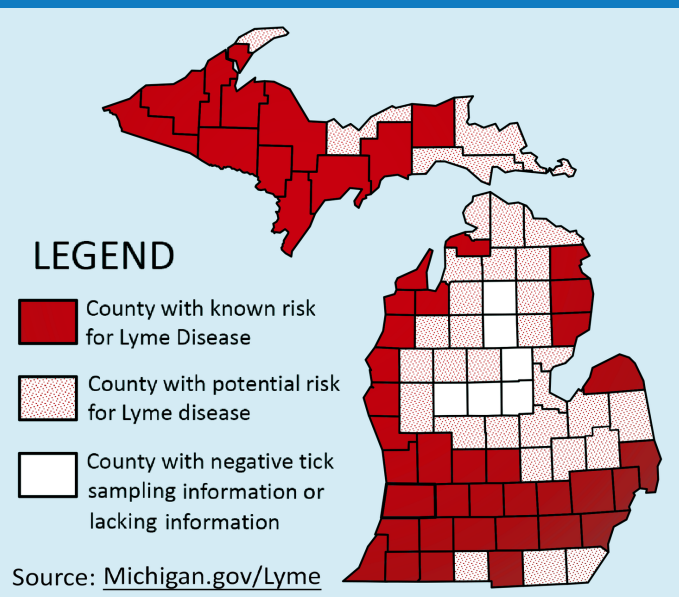
-  1. American dog tick
-  2. Blacklegged (deer) tick
-  3. Brown dog tick
-  4. Lone star tick
-  5. Woodchuck tick

Number of Citizen-reported Ticks by Tick Type 1999-2018



Source: MiTracking

2021 Michigan Lyme Disease Risk Map



Source: Michigan.gov/Lyme

LYME DISEASE

Warming temperatures due to climate change could lead to more tick-borne disease affecting human health in serious ways.

Lyme disease is the most common tick-borne disease in the U.S. Cases are increasing in Michigan.

Lyme disease is spread by the blacklegged (deer) tick. Blacklegged ticks are common in Michigan.

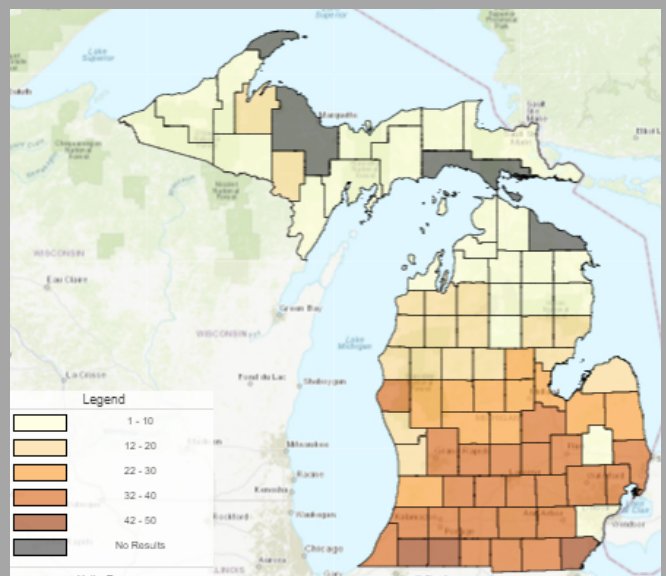
Helping to reduce climate change and adapting to its impacts will provide opportunities to improve health.

CLIMATE CHANGE

The changing climate is helping ticks to spread and thrive.

- Milder winters and longer, hotter, more humid summers mean ticks are active and out longer.
- Ticks are spreading into areas that were once too cold for them.
- People and ticks are now sharing more of the same spaces like trails and yards.
- Some of these ticks can spread disease to humans and dogs.

Number of Extreme Heat Days - 2016 (Daily Heat Index above 90°F)



Source: MiTracking

Data Options ▾

* = Required

* Categories:

* Content Areas:

* Indicators:

* Measures:

* = Required

DATA

Michigan Tracking (MiTracking) makes finding and using data on Michigan environmental and health topics easy. The MiTracking data portal is free, interactive, and available to all. Users can search, download, and display data in tables, charts, and maps like the ones found here.

MiTracking offers tick-related information and data on:

- Ticks (type)
- Lyme disease (coming soon)
- Climate change



Explore data at Michigan.gov/MiTracking or scan the QR code (right).

RESOURCES

- [Emerging and Zoonotic Infectious Disease \(EZID\) - Michigan Emerging Disease Issues - Lyme Disease](http://Michigan.gov/emergingdiseases/home/lyme-disease) (URL: Michigan.gov/emergingdiseases/home/lyme-disease)
- [MICHAP - Michigan Climate & Health Adaptation Program](http://Michigan.gov/ClimateAndHealth) (URL: Michigan.gov/ClimateAndHealth)
- [Michigan Environmental Public Health Tracking \(MiTracking\)](http://Michigan.gov/MiTracking) (URL: Michigan.gov/MiTracking)



Scan the QR code (left) for an electronic version of this document.

