

---

# ANNUAL REPORT 2022



LENAWEE COUNTY  
HEALTH DEPARTMENT

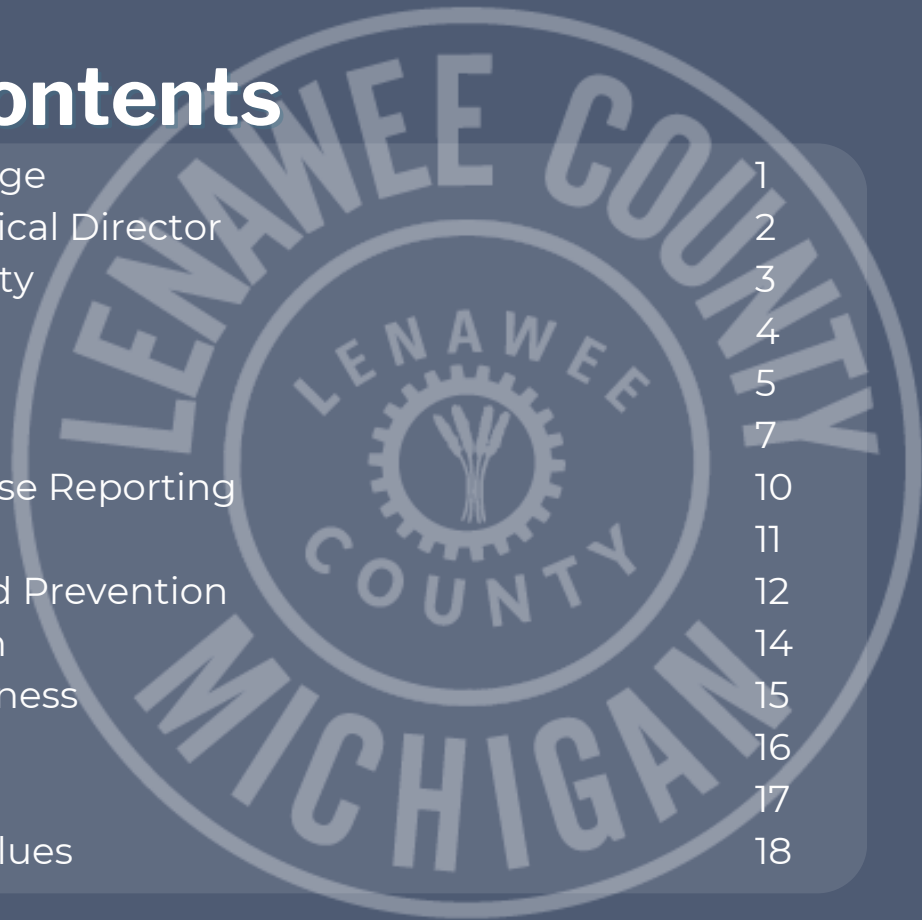
---

2022

# Table of Contents

Health Officers Message	1
A letter from the Medical Director	2
About Lenawee County	3
Financial Report	4
Awarded Grants	5
COVID-19 Reporting	7
Communicable Disease Reporting	10
Personal Health	11
Health Promotion and Prevention	12
Environmental Health	14
Emergency Preparedness	15
Program Highlight	16
Social Media	17
Mission Vision and Values	18

---



# A Message from the Health Officer

---

“

On behalf of the Lenawee County Board of Commissioners and the Lenawee County Board of Health, I am pleased to present the Fiscal Year 2022 Lenawee County Health Department (LCHD) annual report.

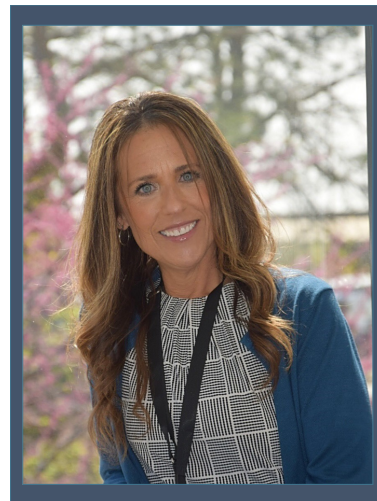
With widespread impact of the pandemic declining, 2022 was a year of change, challenges, adaptability, and resilience. As we emerged from the pandemic, we began to rebuild our non-COVID-19-related programs and department in the aftermath of COVID-19. Despite challenges, we maintained resilience, continuing our comprehensive COVID-19 response, and re-established all division and program-level services that are so important to the clients we serve.

In addition to our traditional public health services, we were able to reinstate active participation in a number of community outreach events promoting our services and supporting our partners. A key area of growth in 2022 includes expanding client-focused services by instituting Community Health Navigator assistance for county citizens.

I am proud to work with a team so dedicated in their commitment to our mission of working together to promote a safe and healthy environment. I would like to convey my gratitude and admiration to the health department personnel for their tireless efforts to serve the citizens and employees of Lenawee County, especially during the global pandemic.

Finally, 2022 brought many changes, showed how far we have come, the obstacles we have conquered, and the continued work needed to improve health outcomes. We are incredibly proud to serve this community and look forward to continuing our momentum to bring our programs and services back to pre-pandemic levels in 2023.

”



**Monica  
Hunt,  
MBA, CPH**

# A Letter from the Medical Director

---

“

I am grateful to have had the opportunity to serve the health needs of both individuals and the public in my very rewarding career in medicine. My career includes a general family practice that is integrative and holistic in nature. I also have been the medical director of six different health departments and have served as the Medical Director of Lenawee County for 31 years. In Lenawee, I have had the honor of working with hard working, dedicated and highly competent people, including the clerical staff, nurses, administrative staff, health officer and County Officials.

Looking back on my career in public health, I have helped manage the everyday problems of the community especially related to communicable diseases and vaccine preventable illnesses. I have overseen the creation of policies, procedures and standing orders of the health department and regularly discussed challenging medical and public health cases with our nurses.

Some of the most interesting and challenging aspects of my long tenure in Lenawee have centered around managing the AIDS epidemic in the early 1990's, organizing the many community bioterrorism drills after 9/11 and, of course, the recent community efforts at managing the Covid 19 pandemic. With the continual expert guidance of our health officers, Martha Hall and Monica Hunt, the staff and I have been able to work on ongoing mitigation efforts and vaccine delivery systems in helping manage Covid as well as navigating difficult decision-making challenges during this problematic time.

In short, being medical director of the Health Department has afforded me the opportunity to be of service to the Lenawee community and I look forward to many more years of continuing in this role.

”



**Dennis K.  
Chernin,  
MD, MPH**

# ABOUT LENAWEE COUNTY

**98,567**  
POPULATION



**840**  
LIVE BIRTHS

**11.10%**  
PERSONS IN  
POVERTY

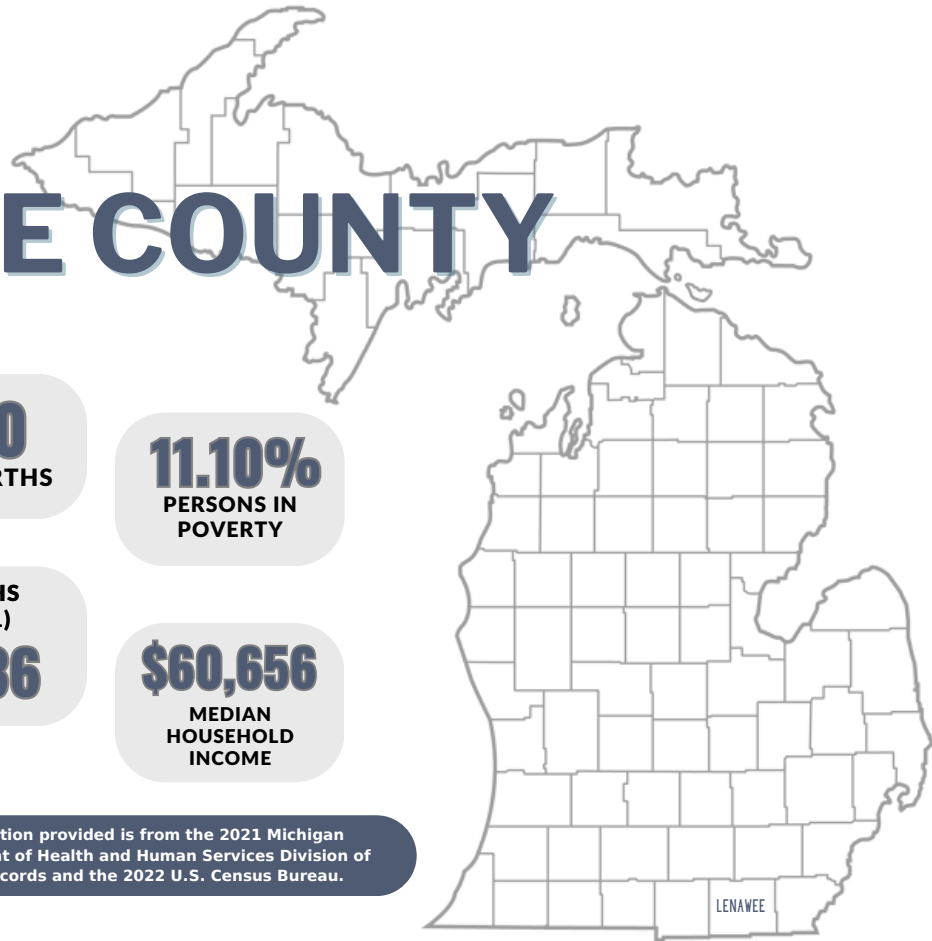
## LEADING CAUSES OF DEATH

HEART DISEASE 306  
DIABETES 210  
CANCER 203  
COPD 92  
UNINTENTIONAL  
INJURY 72

DEATHS  
(2021)  
**1,336**

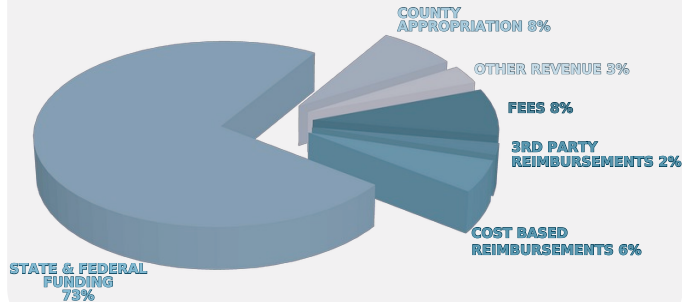
**\$60,656**  
MEDIAN  
HOUSEHOLD  
INCOME

Information provided is from the 2021 Michigan Department of Health and Human Services Division of Vital Records and the 2022 U.S. Census Bureau.

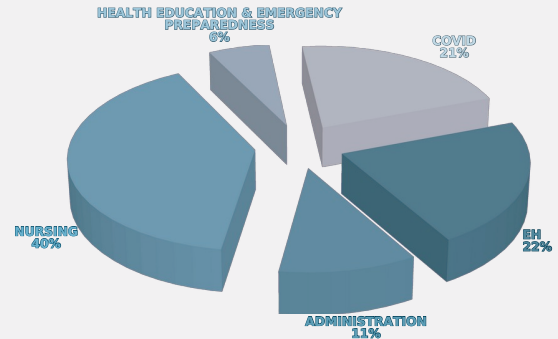


# Financial Report

## Funding \$3,997,572



## Expenditures \$3,971,505



# 2022 Awarded Grants

The LCHD has received funding to improve community communication, education, and outreach about the safe usage and storage of medical marijuana.

As part of this grant-funded campaign, lock bags have been distributed as well as educational materials to ensure medical marijuana stays out of the hands of kids and pets.

The LCHD works with community partners, including local dispensaries to help distribute the *Lock It Up!* bags.

LOCK BAGS GIVEN  
OUT

2,000



# COVID-19 Reporting

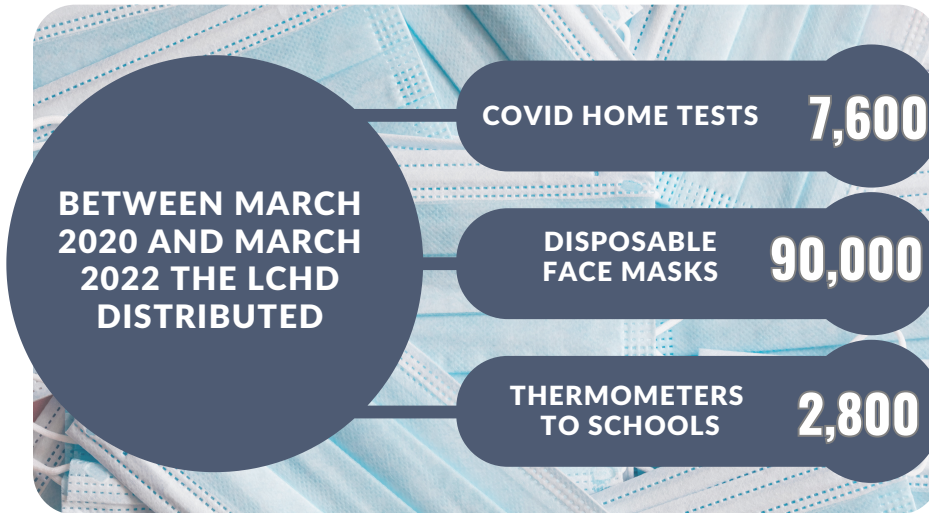
Reliable data is critical for understanding and improving health equity, especially during a pandemic. The Health Department's Epidemiology Team cleaned, analyzed, and reported COVID-19 cases, hospitalization, and death data every weekday. This work was essential in helping the Health Department, community partners, and the public make informed, data-driven decisions. Our COVID-19 case data page was one of the most visited pages on the Health Department website throughout the pandemic.

Our staff worked with many different partners to help respond to outbreaks of COVID-19, including long-term care facilities, child care centers, K-12 schools, universities, homeless shelters, restaurants, jails, and more. Staff tracked cases, alerted people who were potentially exposed, and provided guidance to limit spread.

## REPORTED CASES

**4,675****2020****14,314****2021****14,767****2022**

# COVID-19 Reporting



Distributed by the LCHD to:  
Community Action Agency  
Department on Aging  
Local Libraries  
Project Connect  
Homeless Shelters  
and more.

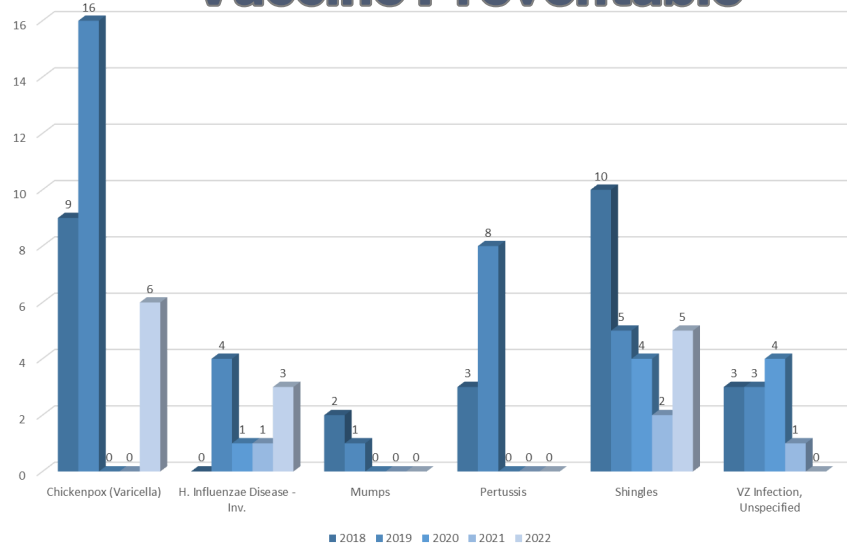
# Communicable Disease Reporting

In Lenawee County, there are many different diseases that are reportable to public health.

Cases of reportable infectious disease are reviewed by the office of Epidemiology and Surveillance. Some reported diseases only require collection of data for statistics.

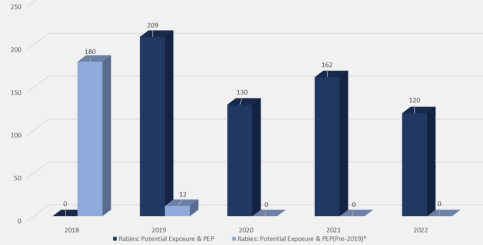
Other reported diseases may require a case interview and education about the reported illness.

## Vaccine Preventable

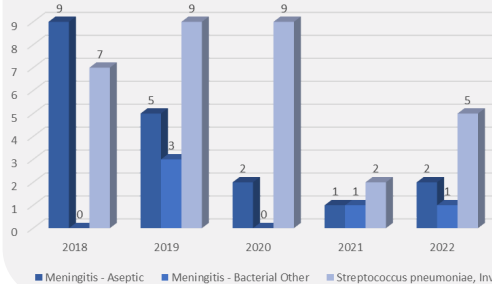


# Communicable Disease Reporting

Rabies Surveillance



Meningitis



Vaccines are the most effective way to protect against certain types of bacterial meningitis.

The Vector Disease Surveillance program provides mosquito and tick monitoring data to the community of Lenawee County.

The LCHD conducts mandatory Animal Bite Reporting and Surveillance.

INFECTIOUS DISEASE CASES INVESTIGATED

18,844

LYME DISEASE

2019 → **1 case REPORTED**

2020 → **4 cases REPORTED**

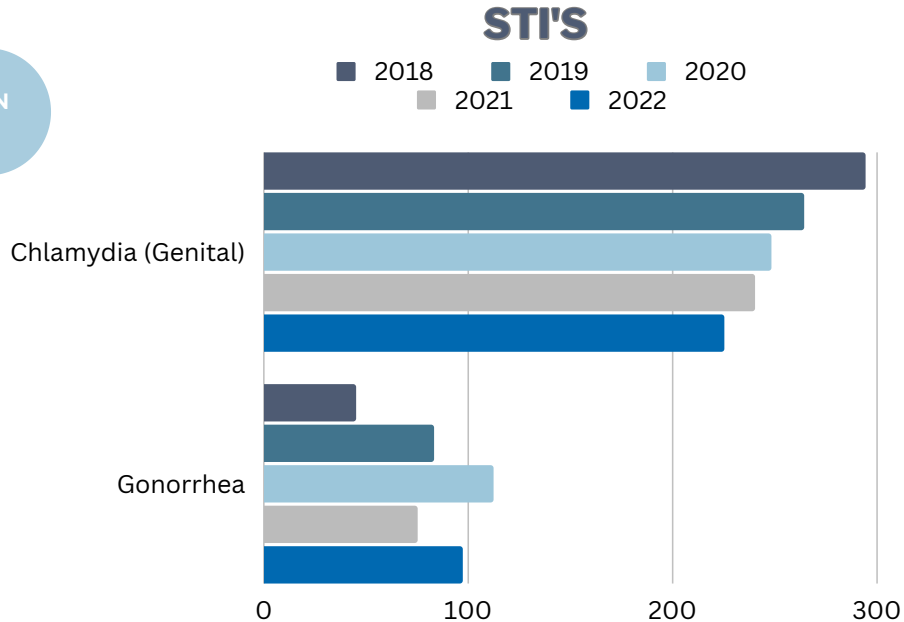
2021 → **6 cases REPORTED**

2022 → **1 case REPORTED**

# Communicable Disease Reporting

**239** STI CLIENTS SEEN IN CLINIC

Confidential Sexually Transmitted Infection (STI) testing, counseling, referrals and partner treatment are all available in our Personal Health Clinic.



# 2022 Personal Health

**54** CSHCS PLANS OF CARE

**8** TB SKIN TEST FOLLOW-UP

**4,975** VISION SCREENINGS

**232** VACCINE WAIVER APPOINTMENTS

**3,525** HEARING SCREENINGS



**36** WISEWOMAN PROGRAM PARTICIPANTS

**1,137** IMMUNIZATIONS ADMINISTERED

**22** BCCNP CLIENTS SERVED

**482** REPRODUCTIVE HEALTH CLIENTS SERVED

**86** ABNORMAL LEAD TESTS CONDUCTED

# 2022 Health Promotion and Prevention

## *Immunizations*

- Provided to the community to help prevent and protect against many types of diseases.

## *Lead Testing*

- Provides lead testing for children ages 1 to 6 years of age.

## *STI/HIV Services*

- Confidential Sexually Transmitted Infection (STI) and Human Immunodeficiency Virus (HIV) testing, counseling, and referrals.

## *Children's Special Health Care Services (CSHCS)*

- Provides services for children and some adults with certain eligible medical conditions including assisting with specialty medical bills, locating resources, and more.

## *Childhood Hearing and Vision*

- Provides testing at schools all across Lenawee County with follow up reports.

*The Lenawee County Health Department promotes and prevents by offering great resources to the community.*



# Environmental Health

43

FOOD COMPLAINT  
INVESTIGATIONS

601

FOOD INSPECTIONS

212

TEMPORARY FOOD  
LICENSES

Environmental Health protects the public from adverse impacts of environmental factors (man made, natural, biological, or chemical) by responding to complaints and enforcing federal, state, and local statutes.

CDC estimates 48 million people get sick, 128,000 are hospitalized, and 3,000 die from foodborne diseases each year in the United States.

# Environmental Health

705

WELL AND SEPTIC INSPECTIONS

17

SEWAGE COMPLAINT INVESTIGATIONS

9

WATER COMPLAINT INVESTIGATIONS



*More than 43 million people—about 15 percent of the U.S. population—rely on domestic (private) wells as their source of drinking water.*

*Radon is the second leading cause of lung cancer in the United States after smoking. The Environmental Health Department gives away free Radon Test Kits every year for Radon Action Month.*



RADON TEST KITS WERE GIVEN AWAY IN JANUARY 2022 FOR RADON ACTION MONTH

367

# Emergency Preparedness

Working with the community, the Lenawee County Health Department works to:

- Prepare for disasters before they occur
- Respond to disasters when they occur
- Support the community through the recovery process after a disaster.

In FY 2021/2022, we provided regular COVID updates through our website, social media pages, and newsletter which was distributed to over 15,000 individuals.

We continued to provide support for COVID home tests at the local libraries.



*We continued to support the COVID testing site at the Lenawee Transportation Garage*

# Program Highlight

## Community Health Navigators

In FY 2022 the Lenawee County Health Department received a grant from the Michigan Center for Rural Health in partnership with the CDC to implement a Community Health Worker program. The LCHD program titled Community Health Navigators (CHN) works with the goal of providing resources and outreach about healthy lifestyles to the community. The workplan for this grant consists of attending outreach events such as the Lenawee County Fair and Juneteenth.

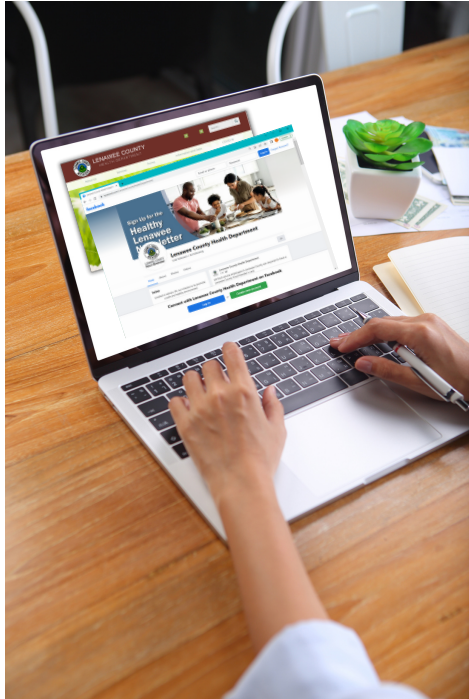


Health related giveaways were ordered including pedometers, water bottles, lock bags, and MyPlate bookmarks. These items go hand in hand with the topics discussed at outreach events.

In June 2022, two CHNs completed the necessary training through the Michigan Community Health Worker Alliance (MiCHWA) and in August 2022, a third CHN was trained.

CHNs completed additional training in a wide variety of topics such as chronic disease management, trauma informed care, and motivational interviewing. All CHNs are USDA Nutrition Certified and one is an Adverse Childhood Experience Community Champion.

# Social Media



723 FACEBOOK POSTS 

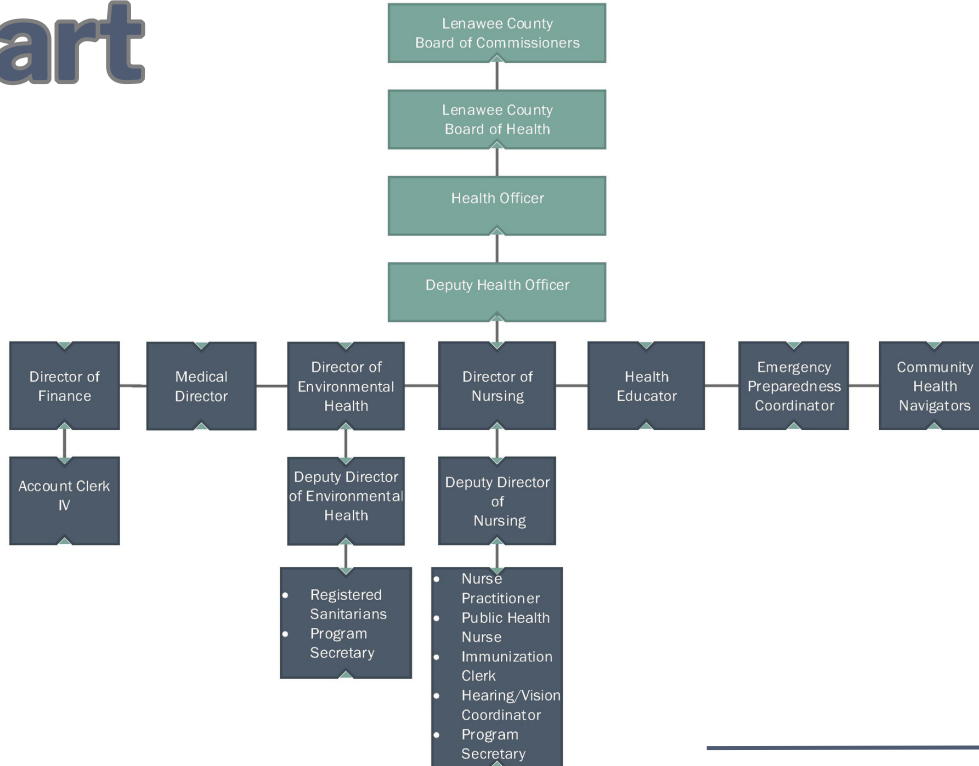
1,410,332 IMPRESSIONS

358 INSTAGRAM POSTS 

459 NEW FOLLOWERS

431 TWITTER TWEETS 

# LCHD Organizational Chart



# VISION

*Lenawee County is a Safe and Healthy Community*

# MISSION

*To Promote a Safe and Healthy Environment*



# Thank You

